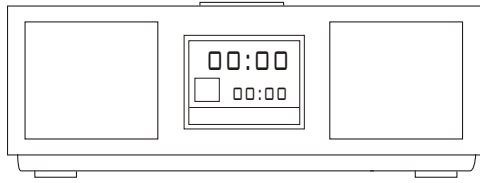


TEAC



SERVICE MANUAL

GR-10i/SR-L200i

AM/FM Stereo Receiver



NOTES

- PC board shown are viewed from parts side.
- The parts with no reference number or no parts number in the exploded views are not supplied.
- As regards the resistors and capacitors, refer to the circuit diagrams contained in this manual.
- ⚠ Parts marked with this sign are safety critical components. they must be replaced with identical components - refer to the appropriate parts list and ensure exact replacement.
- Parts of [] mark can be used only with the version designated.
[T/C]: USA [AUS]: AUSTRALIA

CONTENTS

1 SAFETY INFORMATION	2
2 SPECIFICATIONS	3
3 ADJUSTMENT AND CHECKS	4
4 EXPLODED VIEW AND PARTS LIST	6
5 PC BOARDS AND PARTS LISTS	10
6 WIRING DIAGRAM	14
7 INCLUDED ACCESSORIES	15

GR-10i/SR-L200i

1 SAFETY INFORMATION

SAFETY INFORMATION

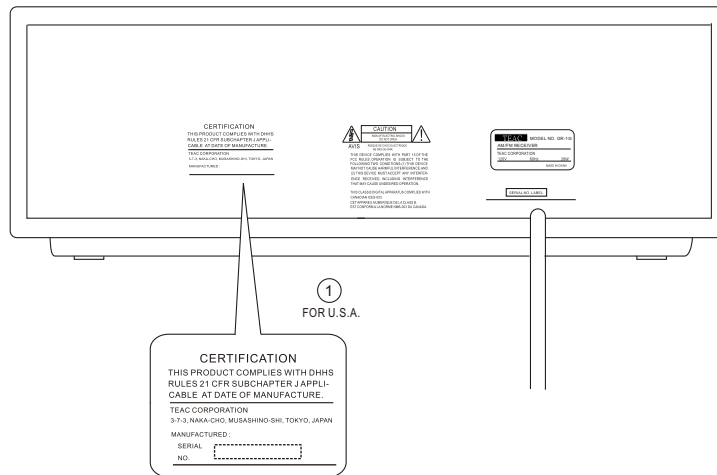
This product has been designed and manufactured according to FDA regulations "title 21, CFR, chapter 1, subchapter J, based on The Radiation Control for Health and Safety Act of 1968" and is classified as class 1 laser product. There is not hazardous invisible laser radiation during operation because invisible laser radiation emitted inside of this product is completely confined in the protective housings. The label required in this regulation is shown ①.

• **CAUTION**

USE OF CONTROLS OR ADJUSTMENT OR PERFORMANCE OF PROCEDURES OTHER THAN THOSE SPECIFIED HEREIN MAY RESULT IN HAZARDOUS RADIATION EXPOSURE.

DO NOT REMOVE THE PROTECTIVE HOUSING USING SCREWDRIVER.

IF THIS PRODUCT DEVELOPS TROUBLE, MAKE A CONTACT WITH OUR SERVICEMAN, AND DO NOT USE THE PRODUCT A TROUBLED STATE.



2 SPECIFICATIONS

TUNER Section

Frequency Range : 87.5MHz to 108.00 MHz (100kHz step) - USA
87.5MHz to 108.00 MHz (100kHz step) - AUS
520kHz to 1710 kHz (10kHz step) - USA
522kHz to 1629 kHz (9kHz step) - AUS

SPEAKER SYSTEM Section

Type : 65 mm x 2
Impedance : 4 ohms

GENERAL

Total Output Power: 4W + 4W
Power Requirements: 120V AC, 60Hz (USA)
240V AC, 50Hz (AUS)
Power Consumption: 28 W
Dimension (W x H x D): 340 x 125 x 249 mm
Weight: (net) 3.0 kg

Standard Accessories: Remote Control Unit x 1
Battery for Remote Control Unit x 1
AM Loop Antenna x 1
i-Pod dock adaptor x 7
Cover for the Dock x 1
Stereo mini plug cable x 1
Owner s Manual x 1
Warranty Card x 1

- Design and specifications are subject to change without notice.
- Illustrations may differ slightly from production models.
- Weight and dimensions are approximate.

GR-10i/SR-L200i

3 ADJUSTMENTS AND CHECKS

3-1 TUNER Section

- Use a screwdriver with a plastic or ceramic grip for all adjustment.

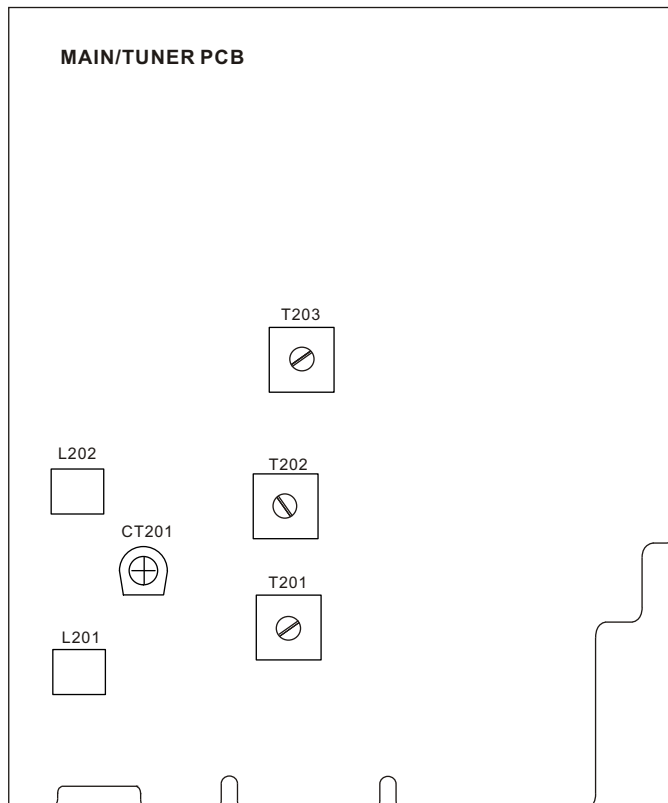
3-1-1 FM adjustment

1. Set the function switch to the FM position.
2. Connect an RF generator to the FM antenna terminal and ground.
3. Connect a SCOPE & VTVM across the speaker output.

3-1-2 AM adjustment

1. Set the function switch to the AM position.
2. Connect an RF generation to a standard radiating loop.
3. Connect a SCOPE & VTVM across the speaker output.

3-2 Adjustment and Test Points



3-2-1 FM/AM alignment chart

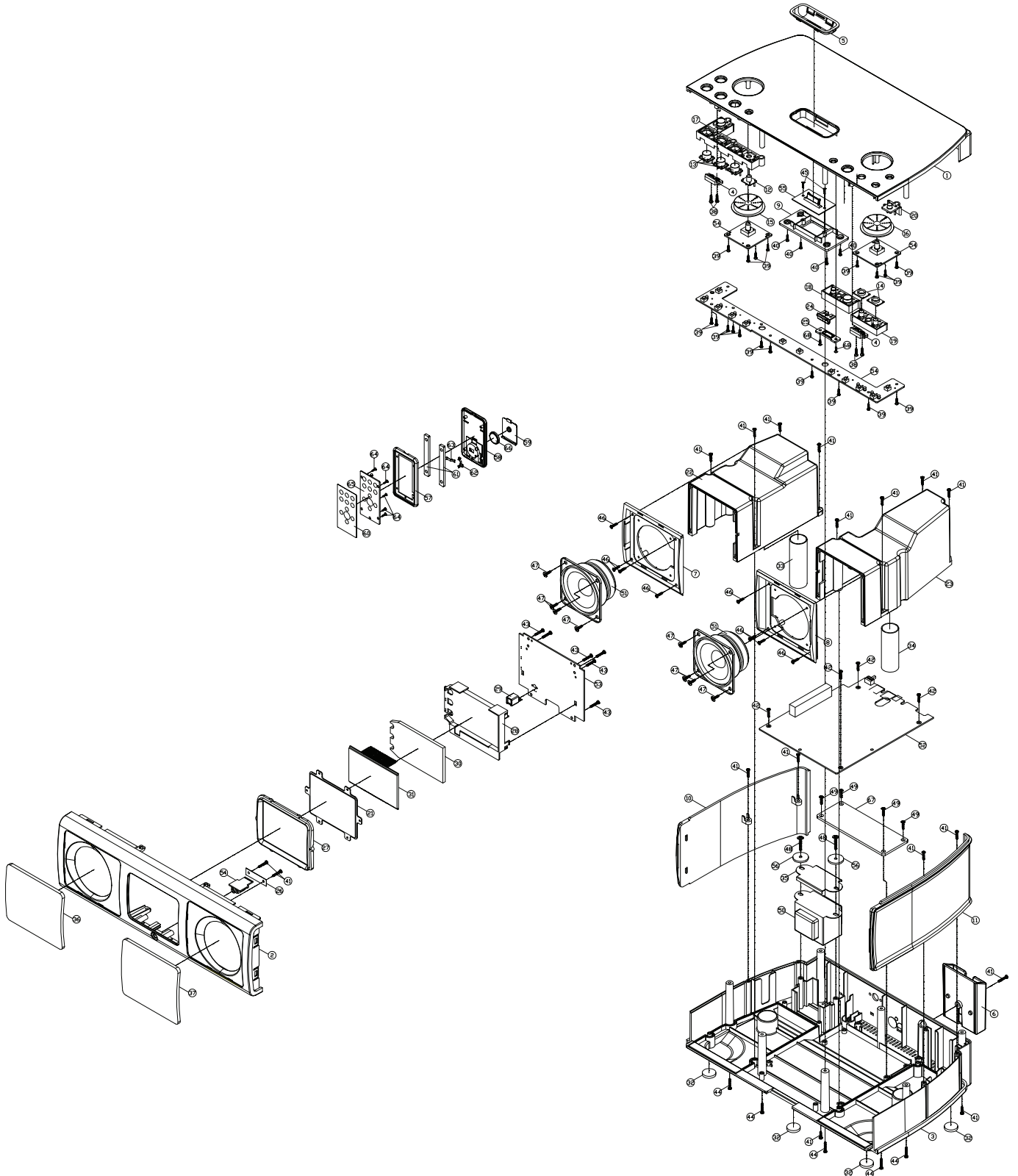
ITEM	SG SETTING	TUNER SETTING	ADJUSTMENT POINT	ADJUSTMENT
FM				
1. FM band	87.5MHz 1kHz, +/-22.5kHz dev.	87.5MHz	L202	Adjust for max. output and best waveform.
2. Tracking	108MHz 1kHz, +/-22.5kHz dev.	108MHz		
	90MHz 1kHz, +/-22.5kHz dev.	90MHz	L201	
	106MHz 1kHz, +/-22.5kHz dev.	106MHz	CT201	
	Repeat step 2 to obtain max adjust.			
AM				
1. IF adjustment	455kHz 1kHz, 30% mod	1710kHz (USA) 1620kHz (AUS)	T203	Center for max. output.
2. AM band	520kHz 1kHz, 30% mod	520kHz (USA) 522kHz (AUS)	T202	Adjust for max. output and best waveform.
3. Tracking	1710kHz 1kHz, 30% mod	1710kHz (USA) 1620kHz (AUS)		
	600kHz 1kHz, 30% mod	600kHz (USA) 603kHz (AUS)	T201	
	1400kHz 1kHz, 30% mod	1400kHz (USA) 1404kHz (AUS)		
	Repeat step 3 to obtain best tracking.			

3-3 CD SECTION

Auto alignment.

GR-10i/SR-L200i

4 EXPLODED VIEWS AND PART EXPLODED VIEW-1



GR-10i/SR-L200i

EXPLODED VIEW-1

REF. NO	PARTS NO.	DESCRIPTION	REMARKS
1-1	56-02GR10I08010	TOP CABINET - SILVER (GR-10i)	
	56-02GR10I0B010	TOP CABINET - BLACK (SR-L200i)	
	56-02GR10I09010	TOP CABINET - WHITE (SR-L200i)	
1-2	56-04GR10I08010	FRONT CABINET - SILVER (GR-10i)	
	56-04GR10I0B010	FRONT CABINET - BLACK (SR-L200i)	
	56-04GR10I09010	FRONT CABINET - WHITE (SR-L200i)	
1-3	56-05SL88M18020	BOTTOM CABINET - SILVER (GR-10i)	
	56-05SL88M1B020	BOTTOM CABINET - BLACK (SR-L200i) [T/C]	
	56-05SL88M19010	BOTTOM CABINET - WHITE (SR-L200i) [T/C]	
	56-05SL88M1B010	BOTTOM CABINET - BLACK (SR-L200i) [AUS]	
	56-05SL88M19020	BOTTOM CABINET - WHITE (SR-L200i) [AUS]	
1-4	56-07GR10I08000	CONNECT CLIP - SILVER (GR-10i)	
	56-07GR10I0B000	CONNECT CLIP - BLACK (SR-L200i)	
	56-07GR10I09000	CONNECT CLIP - WHITE (SR-L200i)	
1-5	56-07GR10I18000	IP PCB HOLDER - SILVER (GR-10i)	
	56-07GR10I1B000	IP PCB HOLDER - BLACK (SR-L200i)	
	56-07GR10I19000	IP PCB HOLDER - WHITE (SR-L200i)	
1-6	56-07SL88M18010	REMOTE CONTROLLER BRK - SILVER (GR-10i)	
	56-07SL88M1B000	REMOTE CONTROLLER BRK - BLACK (SR-L200i)	
	56-07SL88M19000	REMOTE CONTROLLER BRK - WHITE (SR-L200i)	
1-7	56-22GR10I08000	SPEAKER PANEL (L) - SILVER (GR-10i)	
	56-22GR10I0B000	SPEAKER PANEL (L) - BLACK (SR-L200i)	
	56-22GR10I09000	SPEAKER PANEL (L) - WHITE (SR-L200i)	
1-8	56-22GR10I18000	SPEAKER PANEL (R) - SILVER (GR-10i)	
	56-22GR10I1B000	SPEAKER PANEL (R) - BLACK (SR-L200i)	
	56-22GR10I19000	SPEAKER PANEL (R) - WHITE (SR-L200i)	
1-9	56-22GR10I28000	IPOD COVER - SILVER (GR-10i)	
	56-22GR10I2B000	IPOD COVER - BLACK (SR-L200i)	
	56-22GR10I29000	IPOD COVER - WHITE (SR-L200i)	
1-10	56-22SL88M08010	SIDE COVER (L) - SILVER (GR-10i)	
	56-22SL88M2B000	SIDE COVER (L) - BLACK (SR-L200i)	
	56-22SL88M0A000	SIDE COVER (L) - WHITE (SR-L200i)	
1-11	56-22SL88M18010	SIDE COVER (R) - SILVER (GR-10i)	
	56-22SL88M3B000	SIDE COVER (R) - BLACK (SR-L200i)	
	56-22SL88M1A000	SIDE COVER (R) - WHITE (SR-L20i)	
1-12	56-54GR10I09000	TRANSPARENT KNOB (GR-10i)	
	56-54GR10I08000	TRANSPARENT KNOB - (SR-L200i)	
1-13	56-54GR10I19010	TRANSPARENT BIG - WHITE (GR-10i) (SR-L200i)	
	56-54GR10I18010	TRANSPARENT BIG - BLACK (SR-L200i)	
1-14	56-78GR10I09000	TRANSPARENT KNOB RING - WHT (GR-10i) (SR-L200i)	
	56-78GR10I08000	TRANSPARENT KNOB RING - BLACK (SR-L200i)	
1-15	56-54SL88M08000	VOLUME KNOB - SILVER (GR-10i)	
	56-54GR10I2B000	VOLUME KNOB - BLACK (SR-L200i)	
	56-54SL88MAA000	VOLUME KNOB - WHITE (SR-L200i)	
1-16	56-54SL88M18000	TUNING KNOB - SILVER (GR-10i)	
	56-54GR10I3B000	TUNING KNOB - BLACK (SR-L200i)	
	56-54SL88MBA000	TUNING KNOB - WHITE (SR-L200i)	
1-17	56-54SL88M58010	POWER KEY&KEY BRK - SILVER (GR-10i)	
	56-54SL88M5B010	POWER KEY&KEY BRK - BLACK (SR-L200i)	
	56-54SL88M5A010	POWER KEY&KEY BRK - WHITE (SR-L200i)	
1-18	56-54SL88M68010	STOP/PLAY KEY - SILVER (GR-10i)	
	56-54SL88M6B010	STOP/PLAY KEY - BLACK (SR-L200i)	
	56-54SL88M6A010	STOP/PLAY KEY - WHITE (SR-L200i)	



GR-10i/SR-L200i

EXPLODED VIEW-1

REF. NO	PARTS NO.	DESCRIPTION	REMARKS
1-19	56-54SL88M78000	ALARM1/ALARM 2 KEY (GR-10i)	
	56-54SL88M7B000	ALARM1 - BLACK (SR-L200i)	
	56-54SL88M7A000	ALARM1/ALARM 2 KEY - WHITE (SR-L200i)	
1-20	56-54SL88M88000	ALARM CHECK KEY (GR-10i)	
	56-54SL88M8B000	ALARM 2 KEY - BLACK (SR-L200i)	
	56-54SL88M8A000	ALARM CHECK KEY - WHITE (SR-L200i)	
1-21	56-57SL10000020	DISPLAY LENS (GR-10i)(SR-L200i) - WHITE	
	56-57SL10000030	DISPLAY LENS - BLACK (SR-L200i)	
1-22	56-62SL88M08000	SPEAKER TUBE(L) - WHITE (GR-10i)(SR-L200i)	
	56-62SL88M0B000	SPEAKER TUBE(L) - BLACK (SR-L200i)	
1-23	56-62SL88M18000	SPEAKER TUBE(R) - WHITE (GR-10i) (SR-L200i)	
	56-62SL88M1B000	SPEAKER TUBE(R) - BLACK (SR-L200i)	
1-24	56-64GR10I08000	LATCH (GR-10i)	
	56-64GR10I0B000	LATCH - BLACK (SR-L200i)	
	56-64GR10I09000	LATCH - WHITE (SR-L200i)	
1-25	56-68GR10I08000	LATCH PRESS PLATE (GR-10i)	
	56-68GR10I0B000	LATCH PRESS PLATE - BLACK (SR-L200i)	
	56-68GR10I09000	LATCH PRESS PLATE - WHITE (SR-L200i)	
1-26	58-63GR10I00020	FIBRE PLATE 32.5X7X1	
1-27	56-78SL1000G000	DISPLAY RING	
1-28	56--07GR10I29000	LCD BRACKET	
1-29	56-07SL88M2B000	REMOTE SENOR BRACKET - BLK (GR-10i) (SR-L200i)	
	56-07SL88M29000	REMOTE SENOR BRACKET - WHITE (SR-L200i)	
1-30	56-57GR10I00000	LCD BACK LENS	
1-31	56-26GR10I00020	FILTER PLATE	
1-32	58-263152500020	HARD RUBBER FOOT	
1-33	58-64SLD88M00020	PAPER TUBE - LONG	
1-34	58-64SLD88M0120	PAPER TUBE - SHORT	
1-35	61-11SLD88M0120	METAL PLATE	
1-36	61-91GR10I08120	SPEAKER GRILL (L) (GR-10i)	
	61-91GR10I00220	SPEAKER GRILL (L) - BLACK (SR-L200i)	
	61-91GR10I0A120	SPEAKER GRILL (L) - WHITE (SR-L200i)	
1-37	61-91GR10I18120	SPEAKER GRILL (R) (GR-10i)	
	61-91GR10I10220	SPEAKER GRILL (R) - BLACK (SR-L200i)	
	61-91GR10I1A120	SPEAKER GRILL (R) - WHITE (SR-L200i)	
1-38	66-140226180321	SELF-TAPPING SCREW TA/BH 2.6X8MM	
1-39	66-140226210321	SELF-TAPPING SCREW TA/BH 2.6X10MM	
1-40	66-140230180321	SELF-TAPPING SCREW TA/BH 3X18MM	
1-41	66-140230212321	SELF-TAPPING SCREW TA/BH 3X12MM	
1-42	66-140330180321	SELF-TAPPING SCREW TA/PH 3X8MM	
1-43	66-140330210321	SELF-TAPPING SCREW TA/PH 3X10MM	
1-44	66-140330216321	SELF-TAPPING SCREW TA/PH 3X16MM	
1-45	66-140520170121	SELF-TAPPING SCREW TA/KH 2X7MM	
1-46	66-140530210321	SELF-TAPPING SCREW TA/KH 3X10MM	
1-47	66-140830212321	SELF-TAPPING SCREW TA/WH 3X12MM	
1-48	66-140830216321	SELF-TAPPING SCREW TA/WH 3X16MM	
1-49	66-140830180321	SELF-TAPPING SCREW TB/WH 3X16MM	

GR-10i/SR-L200i




EXPLODED VIEW-1

REF. NO	PARTS NO.	DESCRIPTION	REMARKS
1-50	 18-203SLD881190	TRANSFORMER EI48 120V/60HZ [T/C]	
	 18-206GR10I0190	TRANSFORMER EI48 240V/50HZ [AUS]	
1-51	19-021082800020	SPEAKER 8W 4 OHM	
1-52	05-01GR10I00000	MAIN/TUNER PCB ASSY [T/C]	
	05-01GR10I00010	MAIN/TUNER PCB ASSY [AUS]	
1-53	05-04GR10I00000	LCD PCB ASSY (GR-10i) (SR-L200i) [T/C] - BLACK	
	05-04GR10I00010	LCD PCB ASSY (SR-L200i) [T/C] - WHITE	
	05-04GR10I00020	LCD PCB ASSY (SR-L200i) [AUS] - WHITE	
	05-04GR10I00021	LCD PCB ASSY (SR-L200i) [AUS] - BLACK	
1-54	05-05GR10I00000	KEY PCB ASSY	
1-55	05-08GR10I00000	IP PCB ASSY	
1-56	68-112323161000	METAL WASHER 3.2X16X1MM	
1-57	56-43GR10I08000	REMOTE FRONT CABINET - SILVER (GR-10i)	
	56-43GR10I0B000	REMOTE FRONT CABINET - BLACK (SR-L200i)	
	56-43GR10I09000	REMOTE FRONT CABINET - WHITE (SR-L200i)	
1-58	56-43GR10I18000	REMOTE REAR CABINET - SILVER (GR-10i)	
	56-43GR10I1B000	REMOTE REAR CABINET - BLACK (SR-L200i)	
	56-43GR10I19000	REMOTE REAR CABINET - WHITE (SR-L200i)	
1-59	56-44GR10I08000	BATTERY DOOR - SILVER (GR-10i)	
	56-44GR10I0B000	BATTERY DOOR - BLACK (SR-L200i)	
	56-44GR10I09000	BATTERY DOOR - WHITE (SR-L200i)	
1-60	57-33GR10I00120	REMOTE PLATE "TEAC"- WHITE (GR-10i)	
	57-33GR10I00220	REMOTE PLATE "TEAC" - BLACK (SR-L200i)	
	57-33GR10I00020	REMOTE PLATE "TEAC" - WHITE (SR-L200i)	
1-61	61-11GR10I000020	WEIGHT STEEL	
1-62	61-25GR10I000020	REMOTE BATTERY PLATE (+)	
1-63	61-25M020800120	BATTERY PLATE (-)	
1-64	66-140520170121	SLEF-TAPPING SCREW TB/KH 2X7MM	
1-65	05-13GR10I00000	REMOTE PCB ASSY	
1-66	51-021301000080	LITHIUM BATTERY	
1-67	61-11SLD88M0020	WEIGHT IRON	
1-68	66-140226160321	SLEF-TAPPING SCREW TA/BH 2.6X6MM	

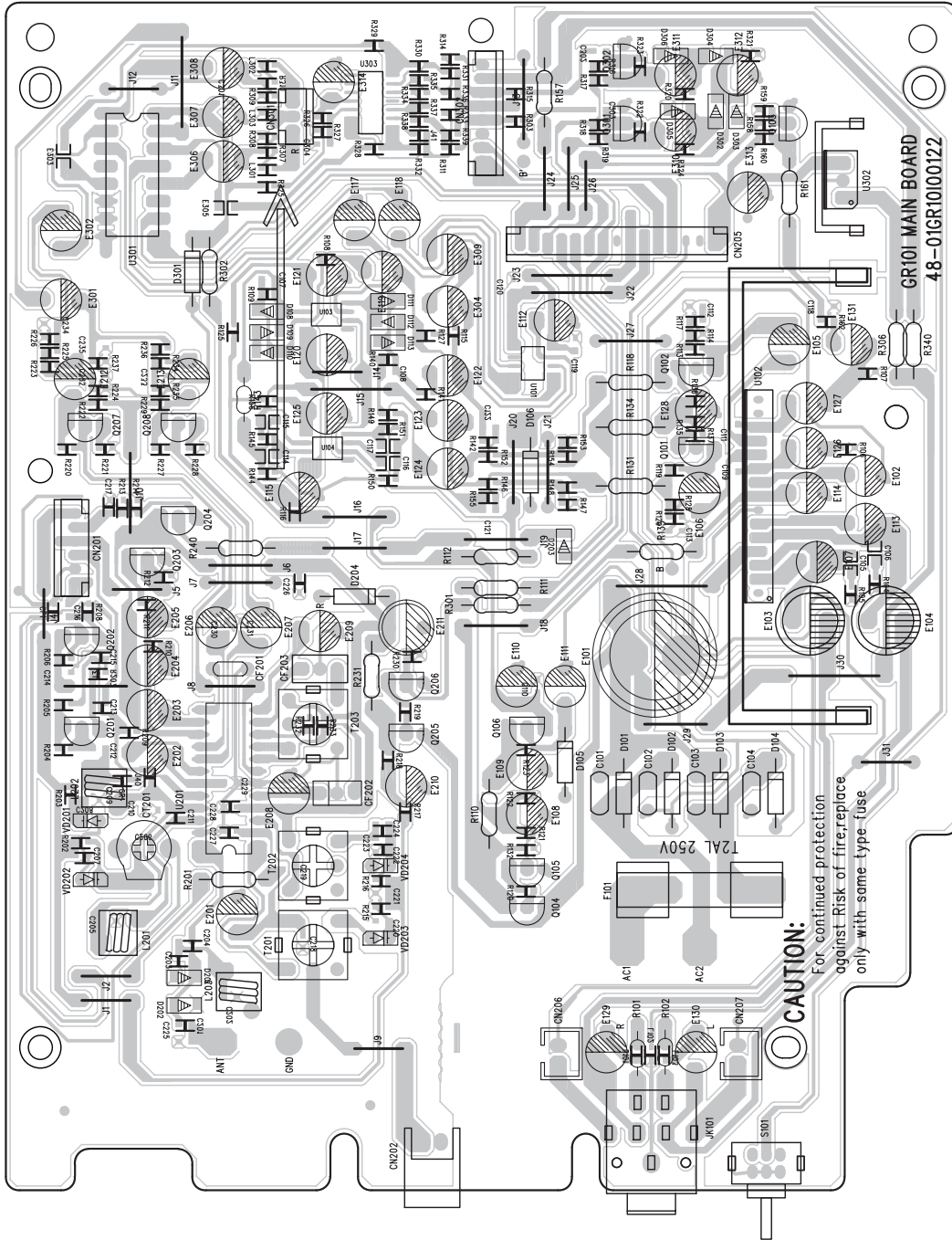
GR-10i/SR-L200i

5 PC BOARDS AND PARTS LIST

MAIN/TUNER PCB ASSY

REF. NO	PARTS NO.	DESCRIPTION	REMARKS
	05-01GR10I00000	MAIN/TUNER PCB ASSY [T/C]	
	05-01GR10I00010	MAIN/TUNER PCB ASSY [AUS]	
	48-01GR10I00122	MAIN/TUNER PCB	
CF201	31-038107020120	DISCRIMINATOR FILTER JT10.7	
CF202	31-028107000120	FILTER L10.7MA5-A	
CF203	31-026450010110	FILTER SFU450B	
CN201	43-012200160120	WAFER 2MM 6PIN	
CN202	43-022250120120	WAFER 2.5MM 2 PIN	
CN205	43-012200215120	WAFER 2MM 15 PIN	
CN206,207	43-012250120120	WAFER 2.5MM 2 PIN	
CN301	43-012200130120	WAFER 2MM 3PIN	
CN302	43-012200180120	WAFER 2MM 8 PIN	
CT201	27-501802201020	TRIMMER 20PF	
D204	12-011470320125	ZENER DIODE 4.7V	
D101-104	12-RL2020000021	RECTIFIER DIODE RL-202	
D105	12-012100320125	ZENER DIODE 10V	
D106,301	12-011510320125	ZENER DIODE 5.1V	
D108-113,201-203,12-PMLL4148L021		SMD DIODE PMLL4148L	
D302-304			
E101	 26-017680850121	E.CAP 6800UF/25V	
E103,104	 26-017100850121	E.CAP 1000UF/25V	
F101	 46-055200300010	GLASS FUSE T2A/250V	
JK101	43-431360001020	PHONE JACK D3.6MM	
L101-103,301-303	38-013100060020	CHIP INDUCTOR 10UH	
L201	40-351450135020	FM COIL 4.5x3.5x0.8mm	
L202	40-351450125020	FM COIL 4.5x2.5x0.8mm	
L203	40-351500145020	FM COIL 5x4.5x0.8mm	
Q101,102	11-2SD1936T0125	TR -2SD1936T	
Q104,205	11-8550D0000025	TR - 8550D	
Q105,106	11-8050D0000025	TR - 8050D	
Q201,202,204	11-9018G0000021	TR -9018G	
Q203,206-208, Q301,302	11-9014C0000021	TR - 9014C	
S101	41-132222000820	SWITCH SK-22D22-G8ENS	
T201	40-013120000020	IFT 10MM 312A - BLACK	
T202	40-01660R002020	IFT 10MM 660R - RED	
T203	40-01A049004020	IFT 10MM A049 - YELLOW	
U101	16-PT2259000021	IC - PT2259S	
U102	16-BA5417000021	IC - BA5417	
U103,104	16-BA4558F00021	IC - BA4558F	
U201	16-LA1823000021	IC - LA1823	
U301	16-TC4052BP0021	IC - TC4052BP	
U302	16-KA7805000121	IC - KA7805E	
U303	16-LM324D000021	IC - LM324D	
VD201,202	12-1SV101000021	VARICAP DIODE 1SV101	
VD203,204	12-1SV149000021	VARICAP DIODE 1SV149	

MAIN PCB



GR-10i/SR-L200i

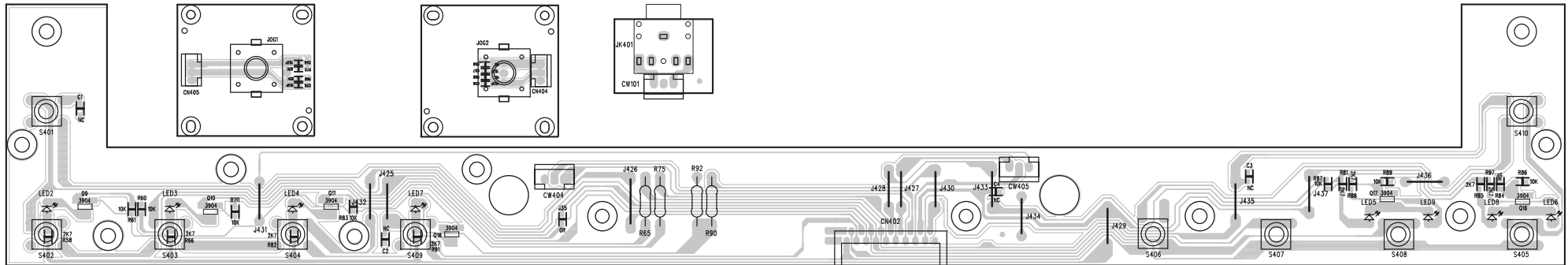
LCD PCB ASSY

REF. NO	PARTS NO.	DESCRIPTION	REMARKS
	05-04GR10I00000	LCD PCB ASSY (GR-10i) (SR-L200i) [T/C] - BLACK	
	05-04GR10I00010	LCD PCB ASSY (SR-L200i) [T/C]- WHITE	
	05-04GR10I00020	LCD PCB ASSY (SR-L200i) [AUS] - WHITE	
	05-04GR10I00021	LCD PCB ASSY (SR-L200i) [AUS] - BLACK	
	48-04GR10I00221	LCD PCB	
D1-4,7	12-PMLL4148L021	SMD DIODE PMLL4148L	
LCD401	13-05GR10I00020	LCD DISPLAY #KPS-M0557-TW-1	
LED10-12	13-011200121020	LED LAMP 2X4MM (WHITE)	
Q1	11-8550D0000025	TR - 8550D	
Q2,4,6,7	11-PMBT39040021	SMD TR - PMBT3904	
Q8	11-PMBT39060021	SMD TR - PMBT3906	
Q12	11-8050D0000025	TR - 8050D	
RE401	17-05FM60380011	OPTIC SENSOR #FM-6038TM2-5A	
U401	16-GY4370000020	MCU - GY437 [T/C]	
	16-GY4370000220	MCU - GY437A [AUS]	
XT1	31-017450002010	CRYSTAL 4.500MHZ	
XT2	31-015327603020	CRYSTAL 32.768KHZ	
ZD5	12-011240320121	ZENER DIODE 2.4V	

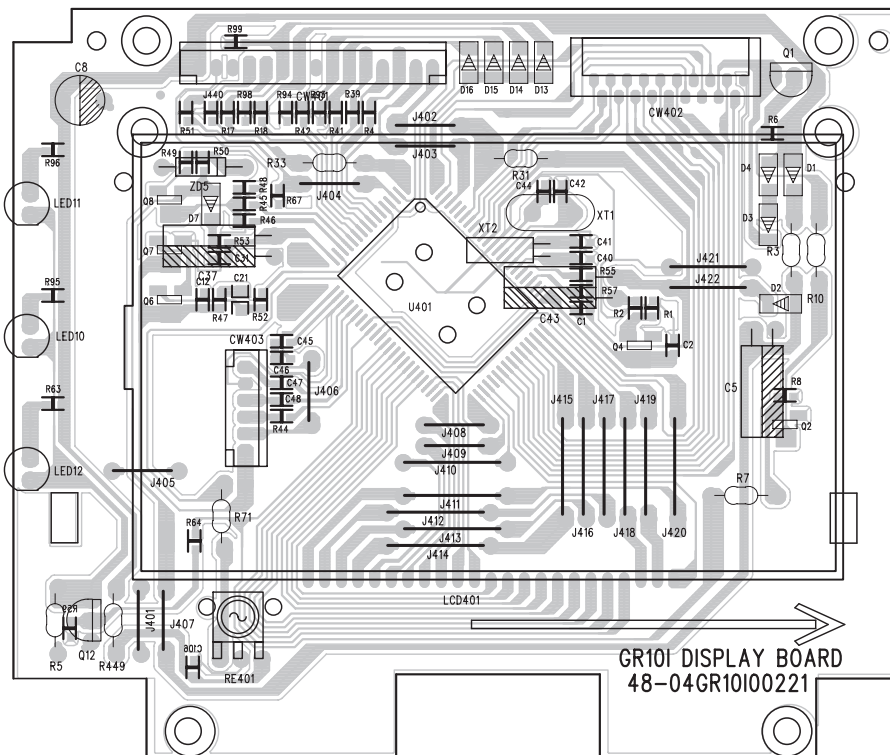
KEY PCB ASSY

REF. NO	PARTS NO.	DESCRIPTION	REMARKS
	05-05GR10I00000	KEY PCB ASSY	
	48-05GR10I00220	KEY PCB	
CN402	43-022100219120	F.F.C. WAFER 1MM 19P	
JOG1,2	22-501200001020	ROTARY ENCODER #E1211A3DV1TC2501	
JK401	43-431355000020	PHONE JACK D3.55MM #TC38-010-01	
LED2-9	13-011300022020	LED LAMP 3MM	
Q9-11,16-18	11-PMBT39040021	SMD TR - PMBT3904	
SW401-410	41-150010030020	TACT SWITCH 6x6MM	

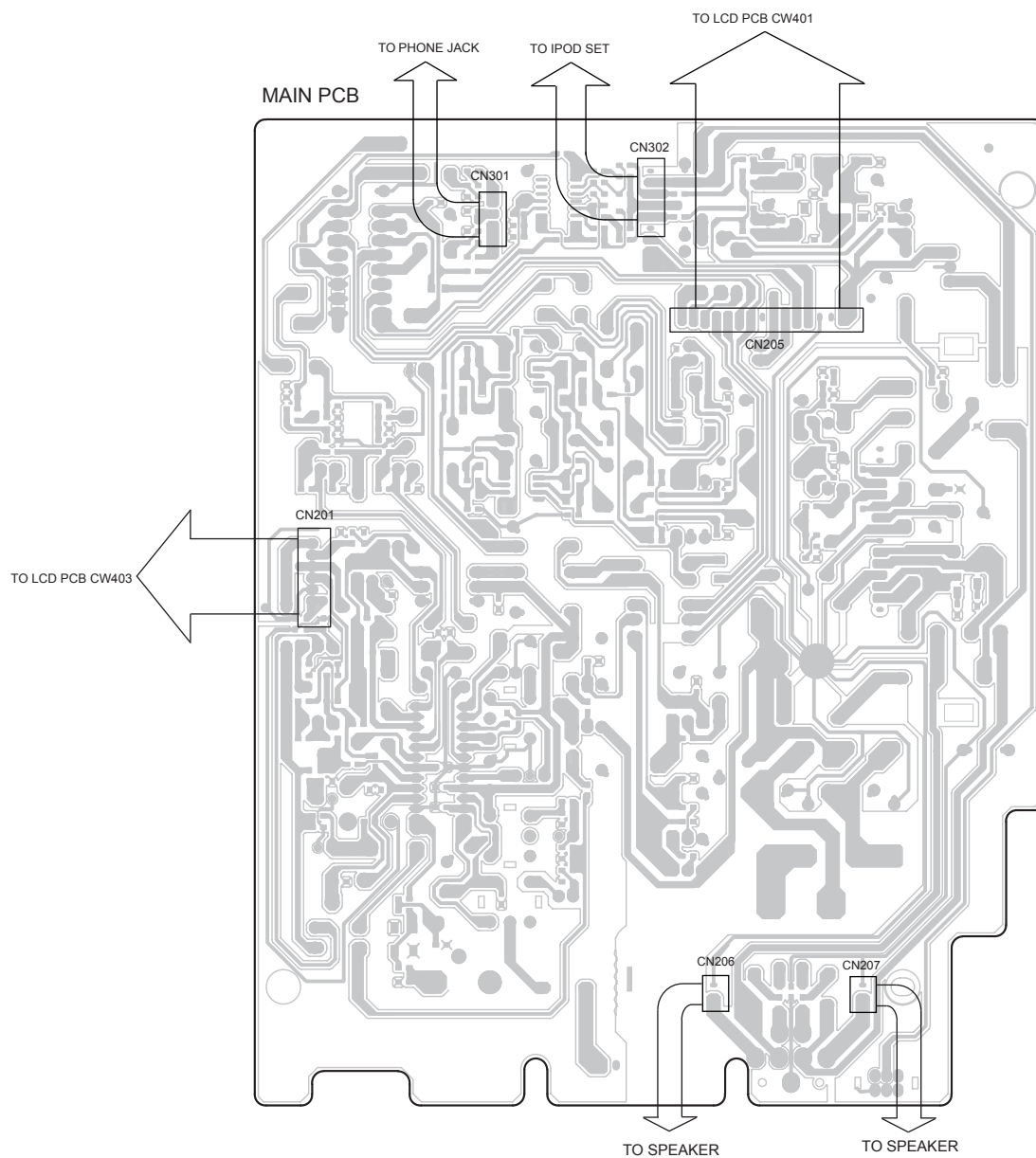
KEY PCB



LCD PCB



6 WIRING DIAGRAM



GR-10i/SR-L200i

7 INCLUDED ACCESSORIES

INCLUDED ACCESSORIES

REF. NO	PARTS NO.	DESCRIPTION	REMARKS
	77-20GR10I00121	INSTRUCTION BOOK- E (GR-10i)	
	77-20GR10I00320	INSTRUCTION BOOK- E/F/SP (SR-L200i) [T/C]	
	77-20GR10I00521	INSTRUCTION BOOK (SR-L200i) [AUS]	
	02-32GR10I00000	AM LOOP ANT ASSY (GR-10i)	
	02-32A200000000	AM LOOP ANT ASSY -BLACK (SR-L200i)	
	02-32MC10800000	AM LOOP ANT ASSY - WHITE(SR-L200i)	
	45-263500000020	STEREO MINI PLUG CABLE	
	51-021301000080	LITHIUM BATTERY CR2032	
	02-17GR10I00000	REMOTE CONTROL - RC-1076 (GR-10i)	
	02-17GR10I00020	REMOTE CONTROL - RC-1078 (SR-L200i) WHITE	
	02-17GR10I00010	REMOTE CONTROL - RC-1079 (SR-L200i) BLACK	
		I-POD DOCK ADAPTOR x 7	
		COVER FOR THE DOCK x 1	

GR-10i/SR-L200i

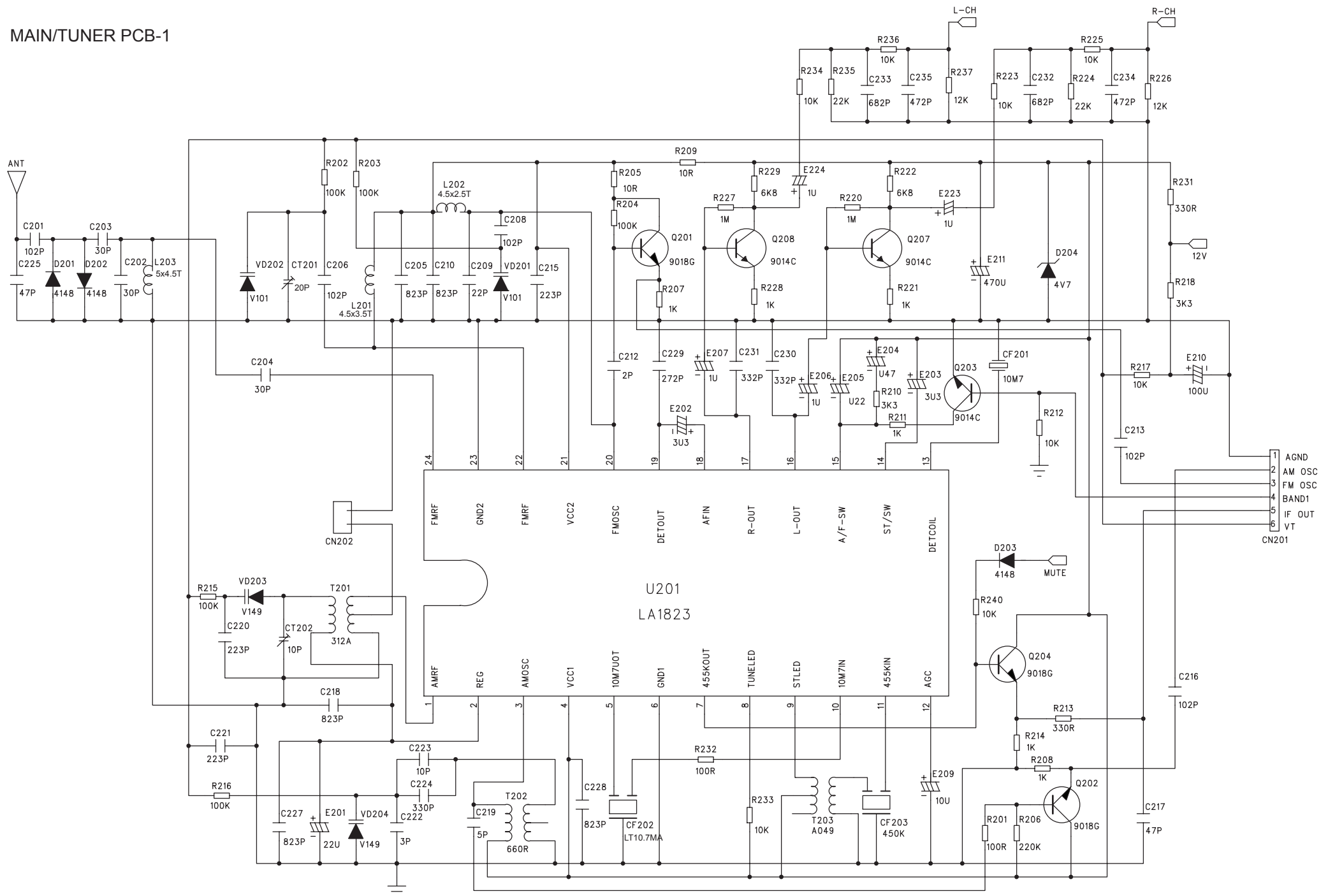
TEAC

TEAC CORPORATION	3-7-3 Nakacho, Musashino-shi, Tokyo 180-8550, Japan Phone:(0422)52-5081
TEAC AMERICA, INC.	7733 Telegraph Road, Montebello, California 90640 Phone: (323)726-0303
TEAC CANADA LTD.	5939 Wallace Street, Mississauga, Ontario L4Z 1Z8, Canada Phone: (905)-890-8008
TEAC MEXICO, S.A.De C.V.	Campesinos N°184, Colonia. Granjas Esmeralda, Delegacion Iztapalapa, CP 09810, Mexico DF Phone: (525)-581-5500
TEAC UK LIMITED	Unit 19 & 20, The Courtyards, Hatters Lane, Watford, Hertfordshire, WD18 8TE5, U.K. Phone:(0845) 130-2511
TEAC EUROPE GmbH	Bahnstrasse 12, 65205 Wiesbaden-Erbenheim, Germany Phone: 0611-71580
TEAC ITALIANA S.p.A.	Via C, Cantu 9/A, 20092 Cinisello Balsamo, Milano, Italy Phone:02-66010550
TEAC AUSTRALIA PTY., LTD.	280 William Street, Melbourne VIC 3000, Australia Phone:(03)9672-2400
A.B.N. 80 005 408 462	

JUNE 2006

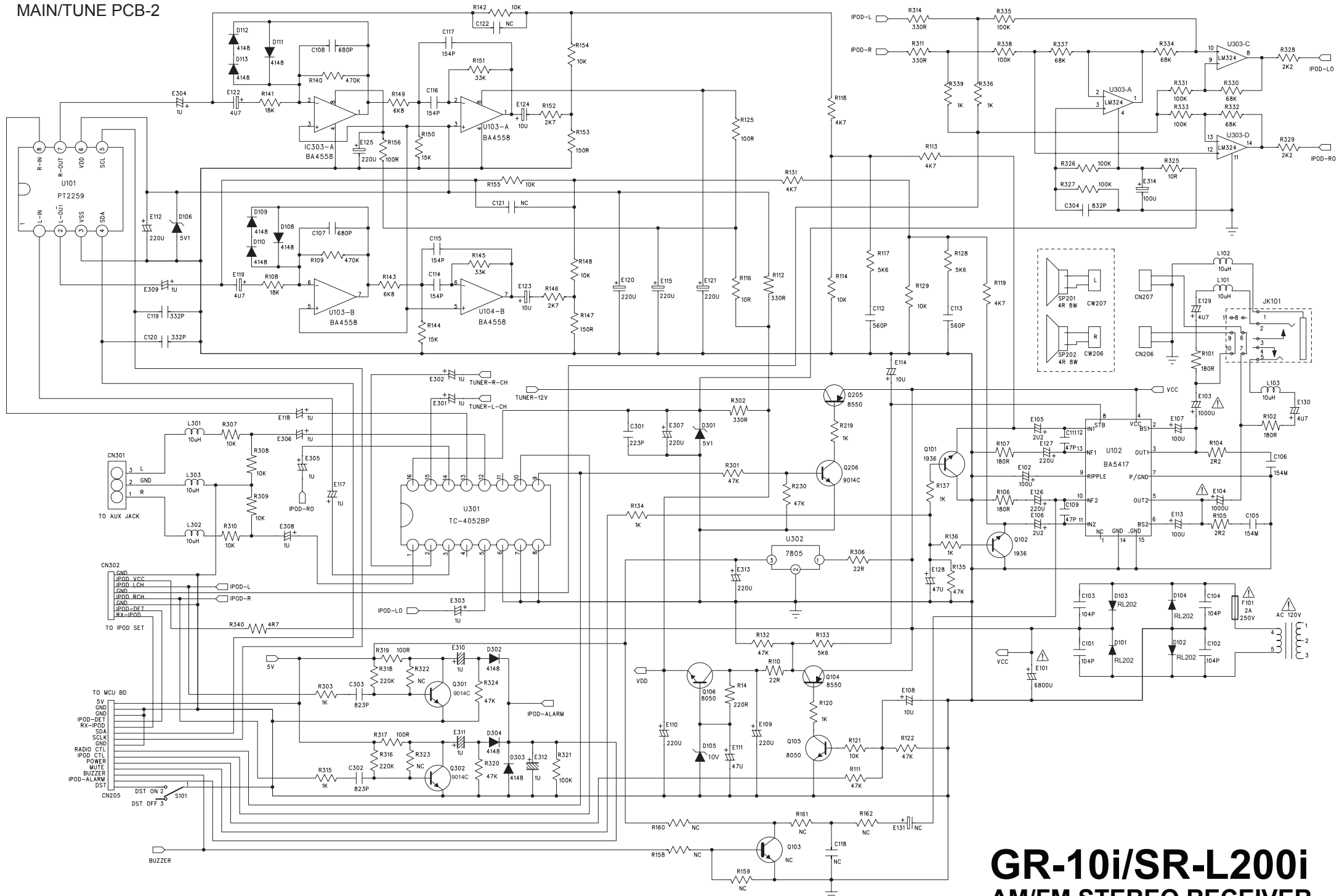
PREPARED IN HONG KONG

MAIN/TUNER PCB-1



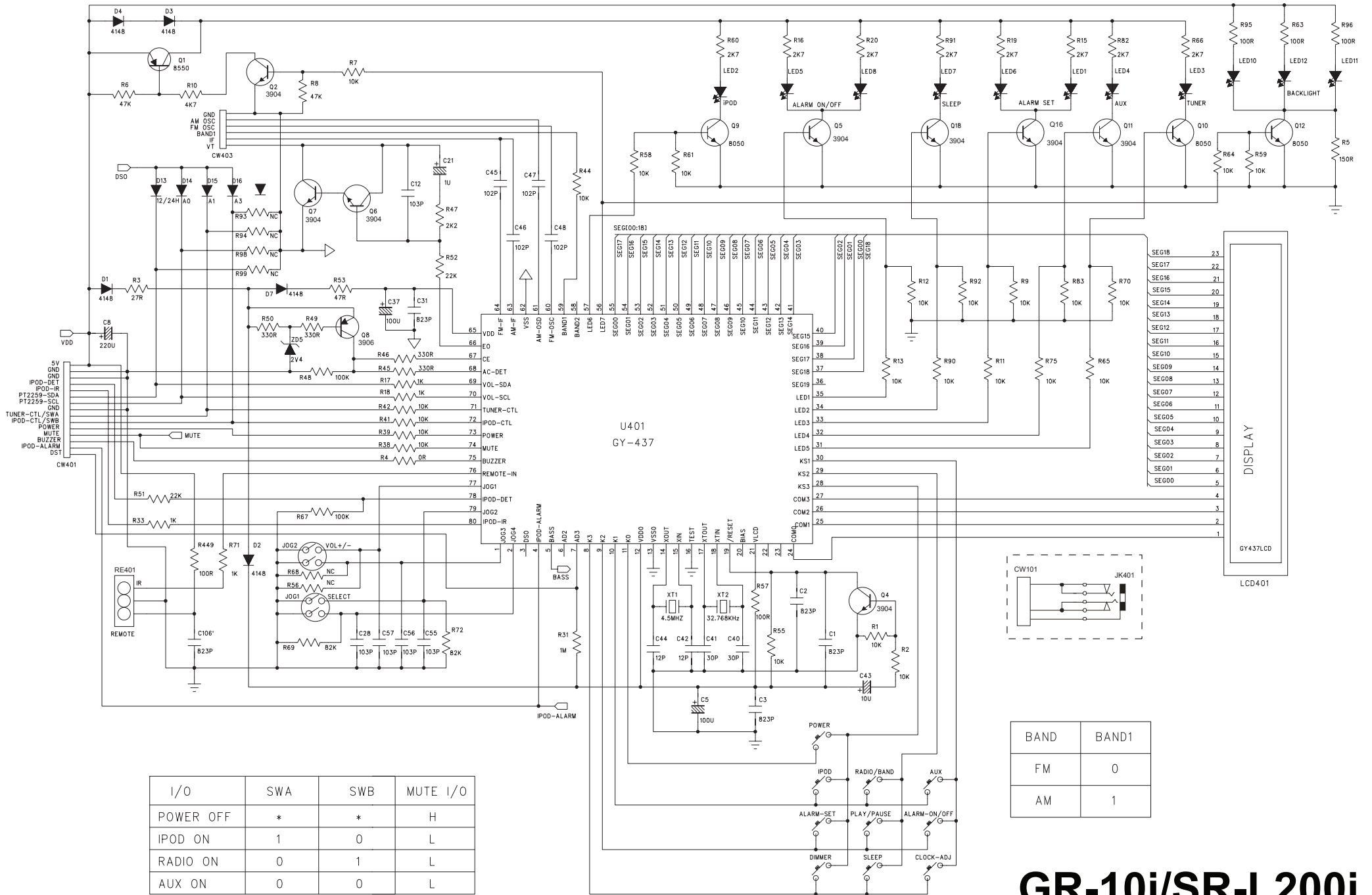
GR-10i/SR-L200i
AM/FM STEREO RECEIVER

MAIN/TUNE PCB-2



GR-10i/SR-L200i
AM/FM STEREO RECEIVER

LCD / KEY PCB



I/O	SWA	SWB	MUTE I/O
POWER OFF	*	*	H
IPOD ON	1	0	L
RADIO ON	0	1	L
AUX ON	0	0	L

BAND	BAND1
FM	0
AM	1

GR-10i/SR-L200i AM/FM STEREO RECEIVER